

1 TCP/IP Reader Test Steps

1.1 Normal connection device, coupled with electric

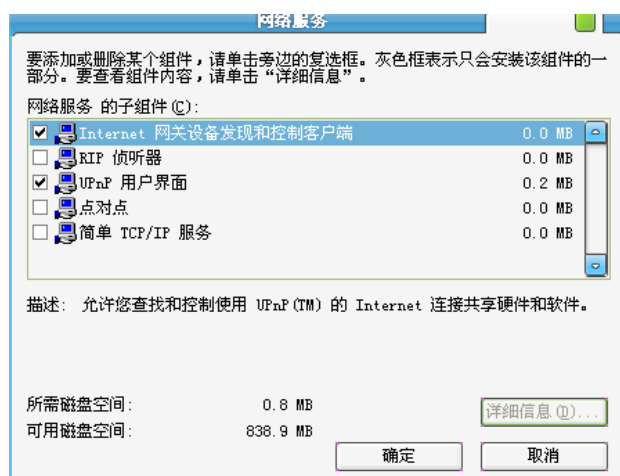
1.2 “Install or Uninstall Windows Components”



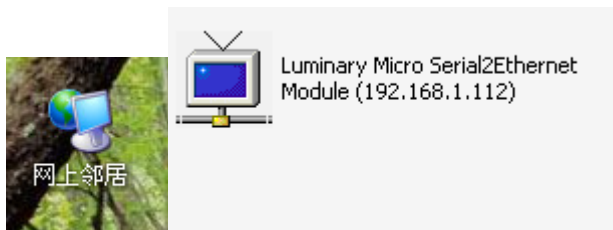
1.3 Windows Components Wizard –Web services –next



1.4 Internet Gateway Facilities, discover and control network client

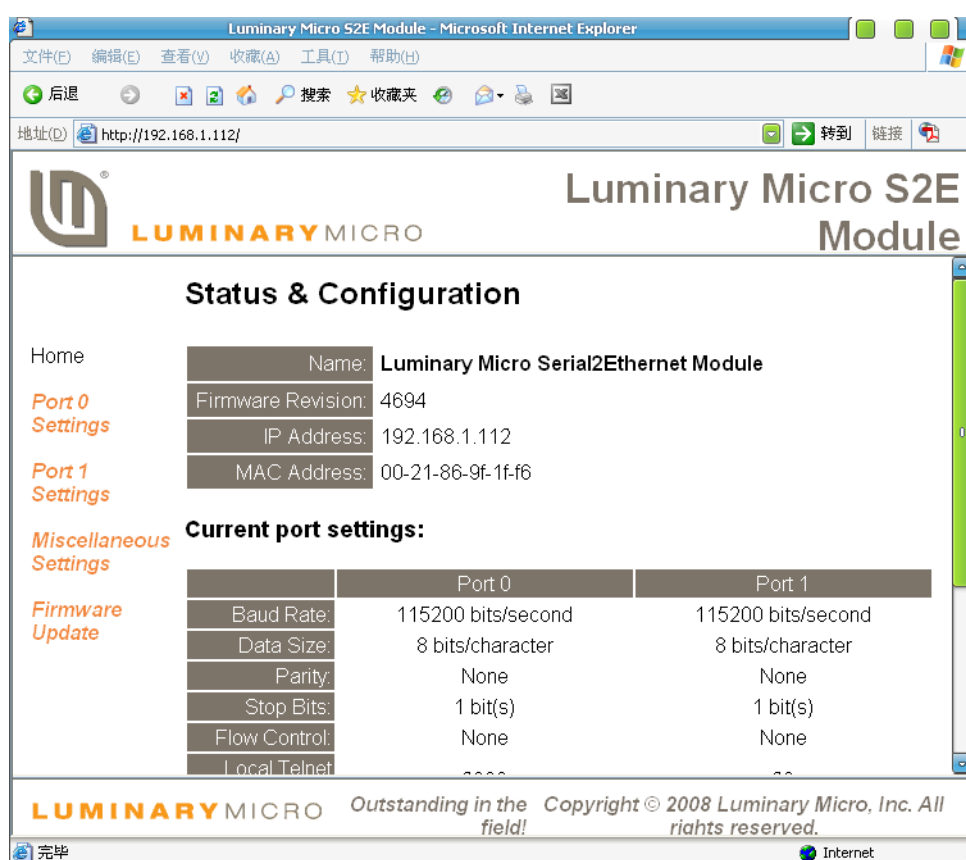


1.5 If the device is normal, which can be seen in this a UPNP device



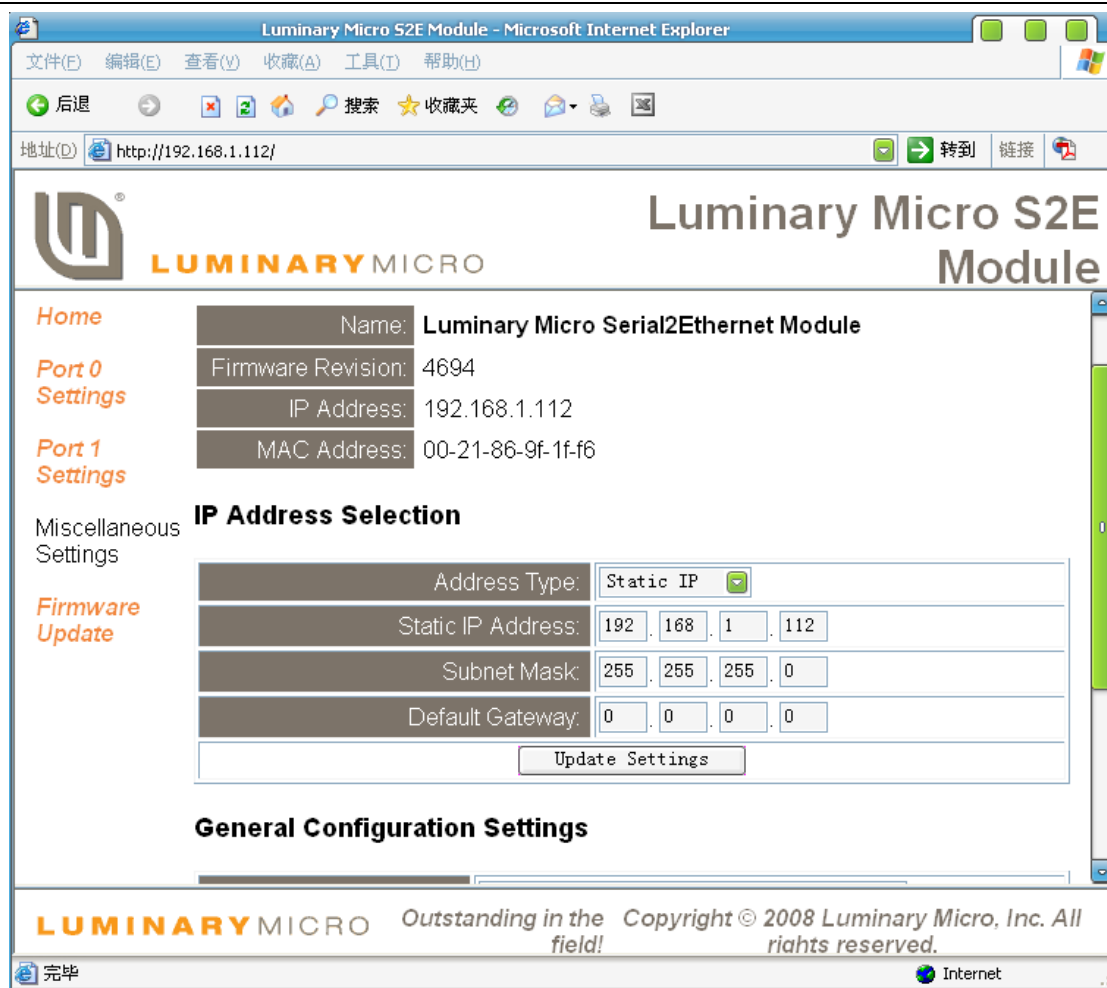
1.6 UPNP devices into web pages, you can conduct a series of settings, we use the

Port 0 Settings
Prot1 some of the functional



The following figure: Static IP, DHCP, Auto IP interface in the following settings:

Miscellaneous Settings

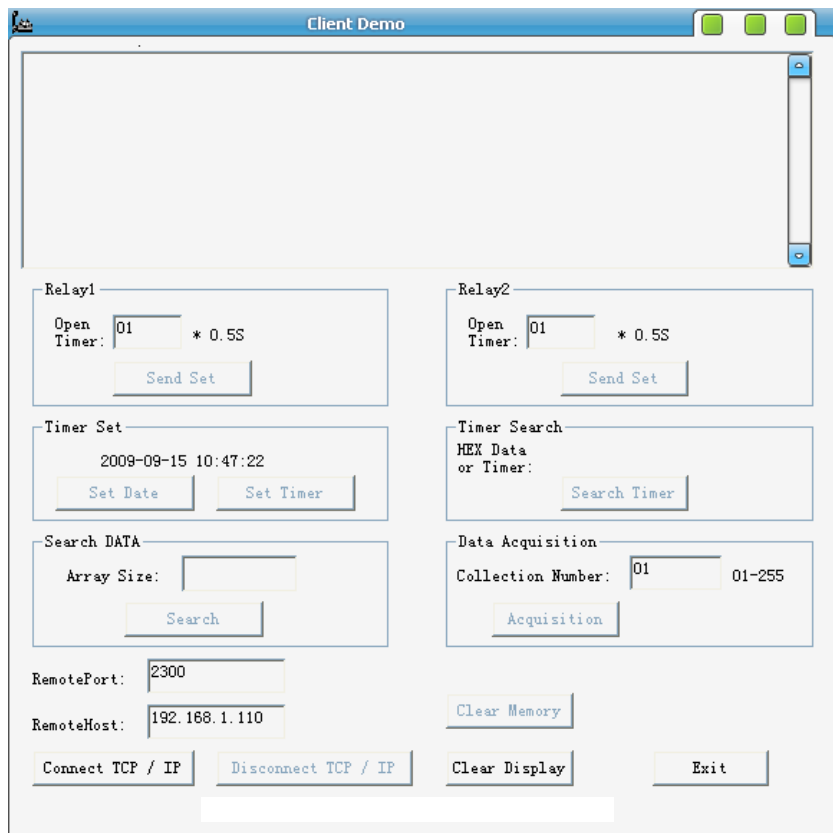


2 Functional Test


2.1 DEMO software to install



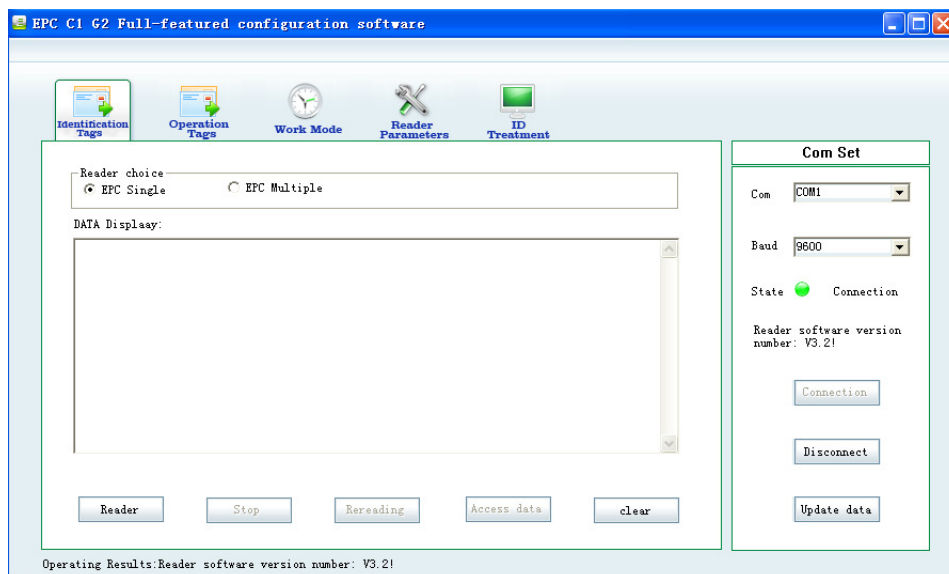
2.2 Interface is as follows:



Details of the TCP/IP command, please refer to "communication protocols"

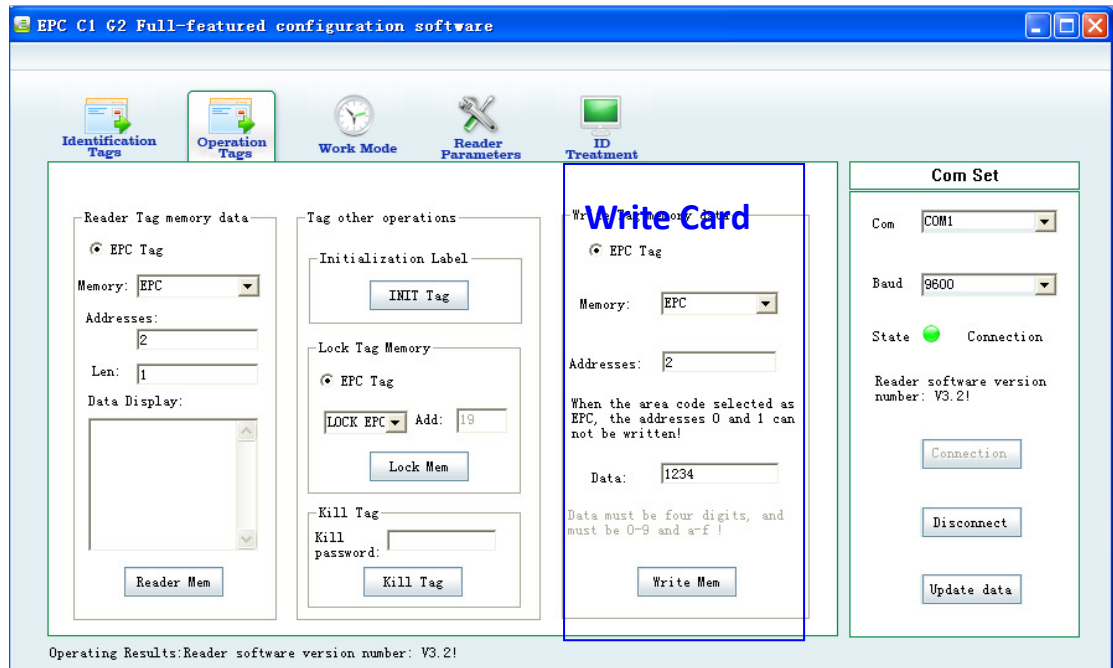
 Communication Protocols.doc

2.3 Demo & Configuration Software pic

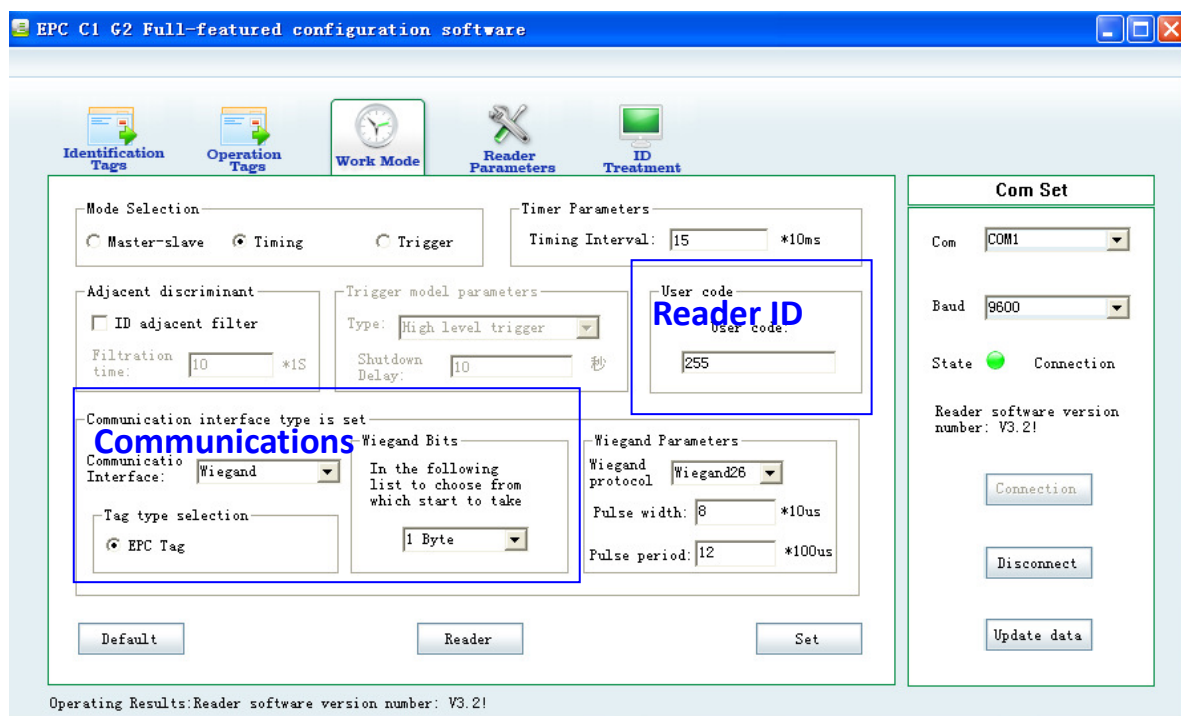


2.3.1 Connect, after configurations , "Update data" onto reader

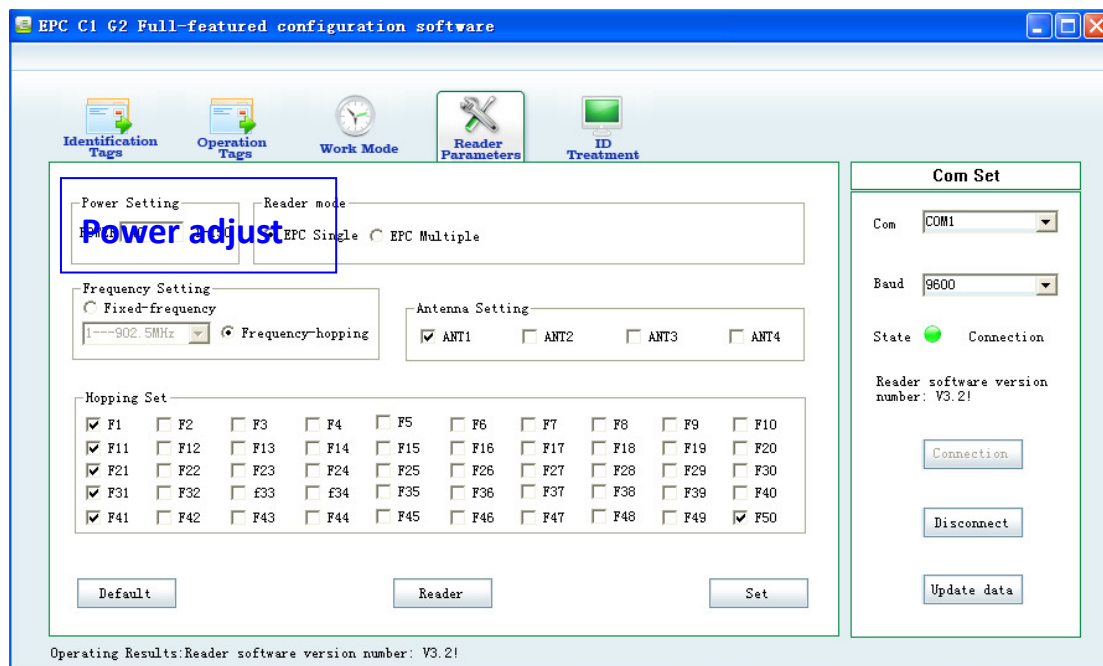
- 2.3.2 In Identifications Tags, "Data Display" the whole length of the Card Number in Hexadecimal.
- 2.3.3 Write card number, Address Selection 2 and 3, need to write twice because only 4digits allowed every time, after writing , need to go Identifications Tags tap and read to confirm

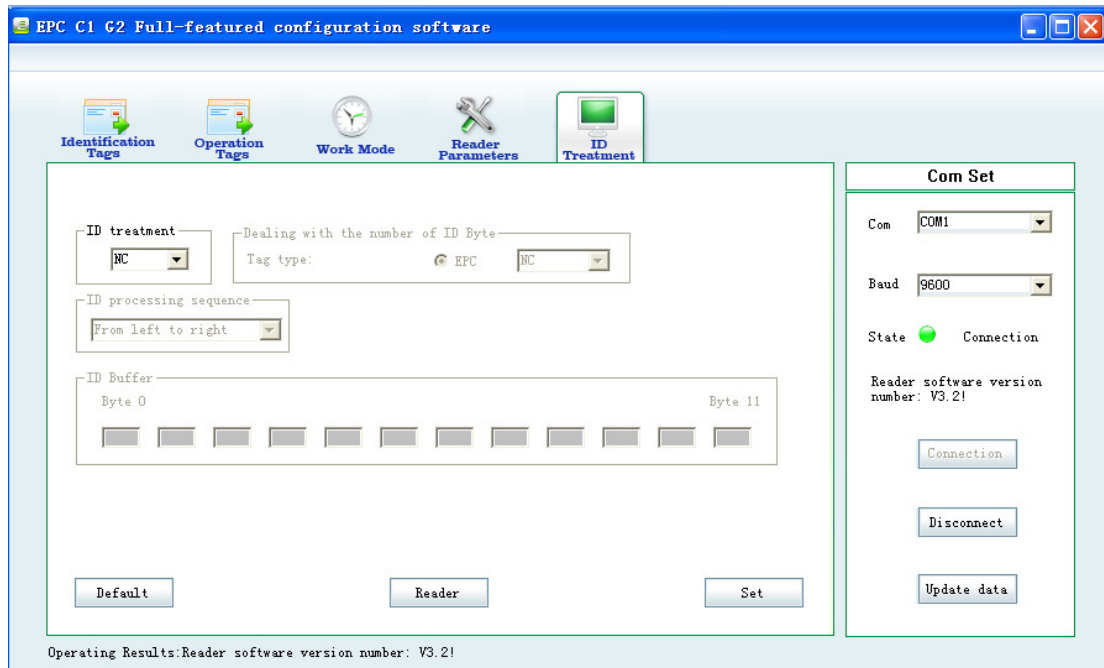


- Read Tag: with options Reserved Memory, TID, UID, User Memory
- 2.3.4 Mode Selection:
- Master-Slave need to click read then it read tag,
 - Timing: configure the reader to read tag every few mS time
 - Trigger: set it on High Level Trigger ,then Short Circle port T to GND. (refer to the bottom port indication)
 - Communication Interface can be: RS232, Weigand, RS485
 - Weigand Bits configure normally as shown in the bellowing picture.
 - For RS485 communication, need to set Reader ID 0~255, the system would automatically change it to 00255ect, then can be use on 4 Door Controller.



2.3.5 Reader Parameters , increase the Power to increase the reading distance





3. Wiring Diagram:

